

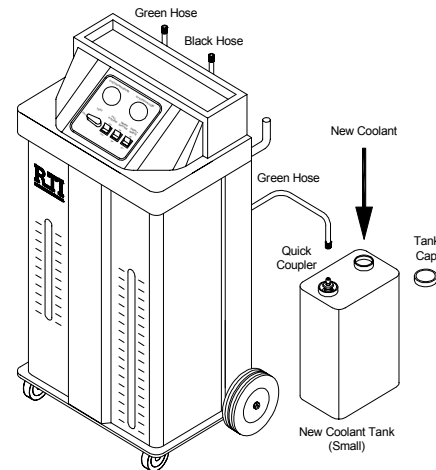
OPERATION GUIDE MCX-2

RTI TECHNOLOGIES, INC.

SET UP

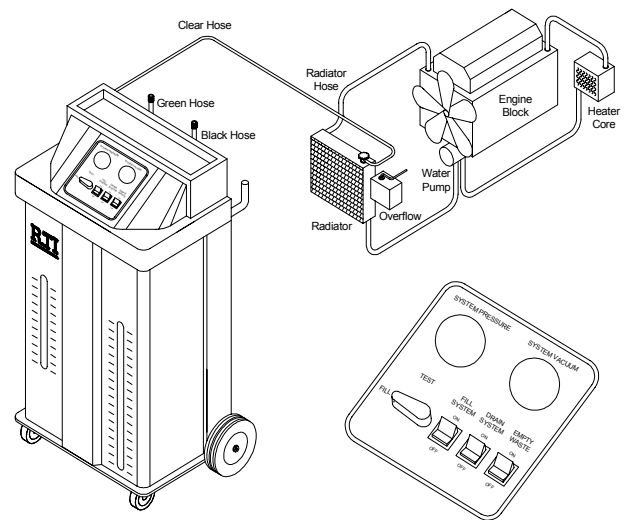
1. Remove the New Coolant Tank cap and fill the tank with new coolant and water in the proportions specified by the coolant supplier. The tank can be disconnected and moved to a bulk storage and fill area if desired.
2. Replace the tank cap. Make sure the green hose is securely connected. Slide the tank to the front so the liquid level can be seen through the front panel slot.
3. Fasten the clips on the tank strap to secure the tanks in the MCX-2.
4. Verify that all switches are in the off position.
5. Connect the red power clip to the "+" (positive) post of the vehicle battery. The battery must be 12 volt.
6. Connect black power clip to an engine ground (not the negative post of the battery).

READ OPERATION MANUAL FOR SAFE OPERATING PROCEDURES



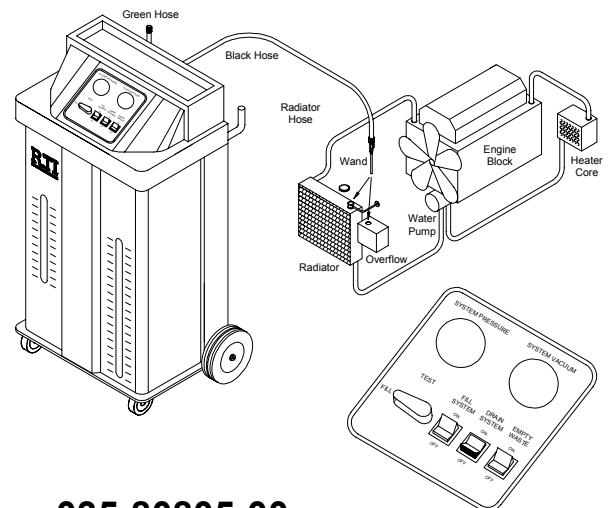
RELIEVE RADIATOR PRESSURE

1. Connect shop air (55 to 100 PSI) to port on rear of unit.
2. Connect small diameter clear hose from MCX-2 to overflow port on the radiator cap as shown.
3. The System Vacuum Gauge will indicate the vacuum level which will increase until the radiator cap opens and relieves the pressure. When the pressure has been relieved, the radiator cap will again close and the vacuum level will increase and become steady.



LOWER COOLANT LEVEL

1. Slowly and carefully remove the cap from the radiator.
2. Remove cap from overflow container.
3. Attach the wand to the black hose. Close the valve on the wand.
4. Set Control Valve to FILL and press the top of DRAIN SYSTEM selector switch to turn on pump.
5. Use the Wand to empty the overflow container and lower the level of coolant in the radiator to a level just below the upper hose connecting the radiator to the engine. Open valve on wand as required.
6. Press bottom of DRAIN SYSTEM selector switch to turn off pump.
7. Replace caps on the radiator and overflow container.



Technical Support: 800-468-2321 (Ext. 259)

035-80805-00

REPLACE COOLANT

1. Disconnect the radiator hose from either the engine or the radiator.
2. Install a Hose Adapter and Step Adapters (Figure A).
3. Connect the Green and Black hoses from the MCX-2 to the Step Adapters. **BE CAREFUL - GET THEM RIGHT !!!!**
4. Open the valves on the two Step Adapters.
5. Check levels in the New Coolant Tank and the Waste Tank.
6. Turn Control Valve to FILL and press the top of FILL SYSTEM and DRAIN SYSTEM selector switches to turn on the pumps.
7. Watch the level of coolant as it lowers in the New Coolant Tank. Press the bottom of the FILL SYSTEM and DRAIN SYSTEM selector switches when it reaches the correct level.

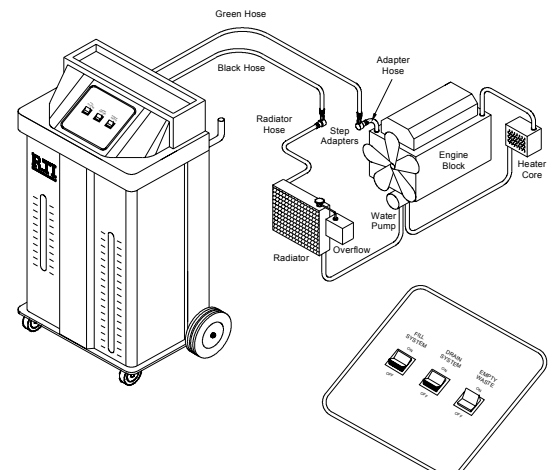
TEST COOLANT SYSTEM FOR LEAKS

1. Turn Control Valve to TEST and press top of FILL SYSTEM selector switch to turn on pump (Figure B).
2. Press bottom of FILL SYSTEM selector switch when the pressure reaches 10 to 13 PSI.
3. Monitor the pressure for a constant pressure to verify that the system does not leak.

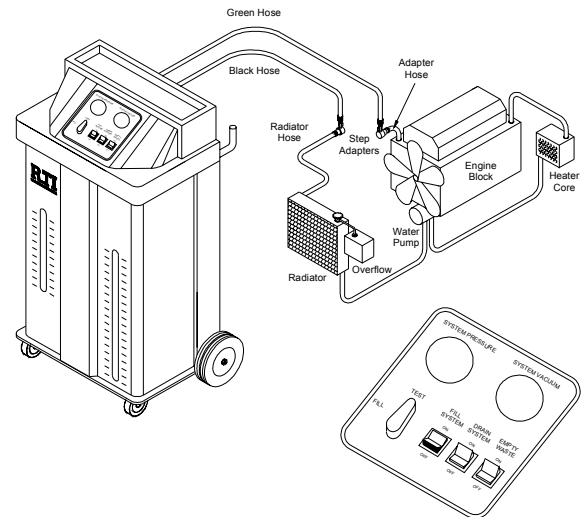
COMPLETE THE JOB

1. Install Wand on black hose (Figure C).
2. Remove the cap from the radiator.
3. Turn Control Valve to FILL and press top of DRAIN SYSTEM selector switch to turn on pump.
4. Use the Wand to lower the level of coolant in the radiator to a level just below the upper hose.
5. Remove Adapter Hose and Step Adapters.
6. Reattach the radiator hose.
7. Install the Wand on the green hose (Figure D).
8. Press the top of FILL SYSTEM selector switch to turn on the pump.
9. Open the valve on the Wand to fill the radiator and overflow container to the maximum levels.

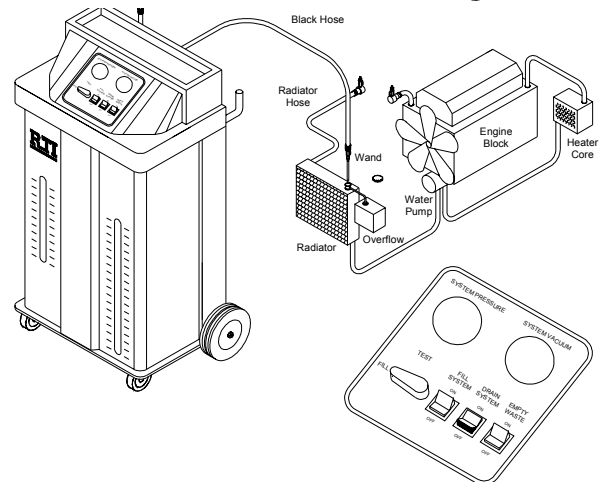
A



B



C



D

