



June 10, 2008

VCX Vacuum Coolant Exchanger Inspection Procedure

K. Butz - VP Marketing & Tech Support

Your VCX Vacuum Coolant Exchanger was developed to provide you with years of trouble-free service in accordance with the utilization of proper inspection and maintenance techniques. It is important to understand this machine functions with its coolant cylinders either under pressure or vacuum, so it is imperative all cylinders receive proper inspection to ensure the proper and safe operation of the equipment is maintained throughout its life cycle.

IMPORTANT - VISUAL TUBE INSPECTION IS REQUIRED PRIOR TO EACH MACHINE USE! SEE BELOW.

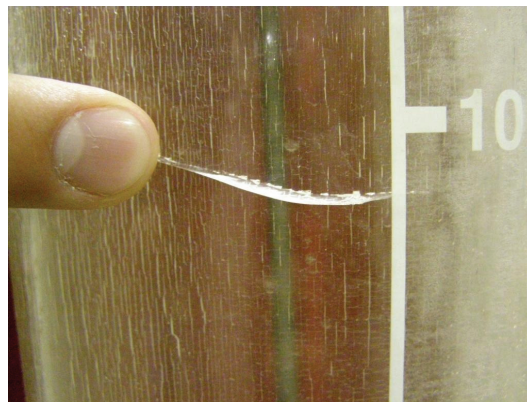
Before **any and every** VCX machine use, it is required for the operator to visually inspect the coolant cylinders for defects such as cracks, nicks, gouges, chips, impact marks, fractures, hairline cracks, crazing, spidering, tube deformation, severe discoloration, cloudiness or hazing or other physical damage. **See examples of some defects below.**

IF ANY TUBES EXHIBIT ANY DEFECTS, THEY MUST BE REPLACED BEFORE MACHINE OPERATION! FAILURE TO COMPLY, MAY RESULT IN TUBE FAILURE AND POSSIBLE INJURY!

If you have questions regarding coolant tube inspection and/or coolant tube replacement, please contact RTI Tech Support at 1-800-468-2321, press extension 1.



Tube cloudiness



Tube crack (crazing also)



Tube crazing

SOME EXAMPLES OF TUBE DEFECTS – DO NOT USE MACHINE

VISUAL INSPECTION PROCEDURE

1.) Visibly inspect condition of coolant cylinders and replace defective tubes as required before use as previously outlined. Please note, coolant tube replacement resulting from a consistent on-going inspection procedure as defined in this document is considered a normal maintenance practice for all VCX Vacuum Coolant Exchanger Machines. Replacement coolant tubes are available from RTI authorized Service Centers, through www.RTI-EXPRESS.com or by contacting RTI Tech Support directly at 1-800-468-2321 and pressing extension 1.

2.) If coolant tube passes visual inspection, it is necessary to affix one coolant tube inspection label [quantity four (4) supplied in this package] to the top of the inspected tube. Before label placement, clean the area with mild soap and water and soft cloth. Do NOT use anything abrasive to clean the tube. Do not use solvent based cleaners to clean the tube. Make sure the area is dry before decal installation. Peel off decal backing paper and locate top edge of decal within ½" of top coolant tube end cap. Make sure the decal is positioned so it is in plain sight of the machine operator when he is directly facing the machine control panel. Please indicate on the supplied post card that all caution labels have been installed on all inspected tubes on all VCX machines in your possession. For additional labels, please contact RTI at 1-800-468-2321 X224.

3.) Check the air supply fitting on the rear of the VCX model. If the sheet metal is bent inward it indicates the VCX unit may have fallen over backwards. **If any VCX machine has fallen over onto any side, it is mandatory all coolant tubes be replaced immediately before the machine is placed back into service.**

4.) Never perform welding or grinding or any other procedure where sharp and/or hot particles could come in contact with the VCX Coolant Exchanger.

5.) If the exterior or interior of any tube is dirty and requires cleaning, utilize a soft cloth and non-abrasive, non-solvent based cleaner. **Never use a wire brush or harsh chemicals to clean the coolant tubes.**